

DENTSPLY

Product Service



Cavitron® Parts Reference

FOR TECHNICAL SUPPORT / REPAIR ASSISTANCE
CALL TOLL FREE: 1-800-989-8826
MONDAY – FRIDAY 8:00AM TO 5:00PM EASTERN TIME
24-HOUR FAX SUPPORT: (717) 767-8508
WWW.DENTSPLYSERVICE.COM

Part numbers and availability are subject to change without notice.

TERMS AND CONDITIONS OF SALE

All prices stated are in U.S. Dollars, and are subject to change without notice. All sales are subject to approval and acceptance by DENTSPLY Professional Division and are made F.O.B. shipping point.

Shipments pursuant to purchase orders instructing DENTSPLY *not to insure* will be shipped at your risk.

Shipments pursuant to purchase orders with no insurance instructions will be shipped at your risk.

Safe shipments by motor freight or express made on bills of lading are the responsibility of the transportation company. In the event of loss or damage, claim should be made direct to the transportation company pursuant to instructions in the notice attached to the packing slip.

Minimum order value is \$100.00 U.S.

CREDIT INFORMATION

Distributors will provide a most recent balance sheet, income statement and such other information reasonably required by DENTSPLY to evaluate the credit worthiness of the distributor within fifteen (15) days after receipt of any request for such information from DENTSPLY.

ITEMS RETURNED FOR CREDIT, EXCHANGE, SERVICE OR REPAIRS

DENTSPLY customers desiring to return unused products or parts must receive a **RETURN MATERIALS AUTHORIZATION (RMA)** number from the DENTSPLY Professional Customer Service Department (See phone numbers below) prior to shipment. This RMA number must be referenced in correspondence accompanying the returned products and **noted on the outside of the shipping carton. If products are shipped without an RMA, they will be returned to the customer.**

In addition, the following terms and conditions apply to all returns:

1. All products returned for credit or exchange must be of **current design in the original, unopened, sealed package** and in sellable condition. Damaged, opened, outdated, obsolete, used or "demo" products, or products and parts purchased more than 6 months prior to the current date are not returnable for credit or exchange. Pharmaceutical products are not returnable except for credit in the unlikely event of a product defect or shipping error.
2. A copy of the original invoice must accompany all product returns for credit or exchange. Products returned must include DENTSPLY customer number, RMA, billing name, address, phone number, a copy of the original invoice, lot numbers, product descriptions, and reason for return.
3. Any credit applied will be based on the original invoice price.
4. Subject to the above, products returned are subject to a minimum 20% restocking charge. Products will not be accepted for return credit or exchange beyond 6 months from the original invoice date.
5. Final approval for replacement or credit is at the sole discretion of DENTSPLY Professional.
6. Transportation charges both ways must be paid by the customer or distributor on products, parts or accessories returned for credit or exchange, regardless of the warranty period.
7. Any parts or products which fail in service more than 30 days after date of installation will be repaired and returned in accordance with the terms of the product warranty. If a product fails after 30 days it should be returned to DENTSPLY Professional for repair.
8. All authorized returns for credit, exchange or repairs, **MUST be shipped to the appropriate address below.** Items sent to any other destination will be subject to additional freight charges.
9. No credit will be issued for expired products.

DENTSPLY Professional Division

Attn: RMA# _____

1301 Smile Way

York, PA 17404

800-989-8826

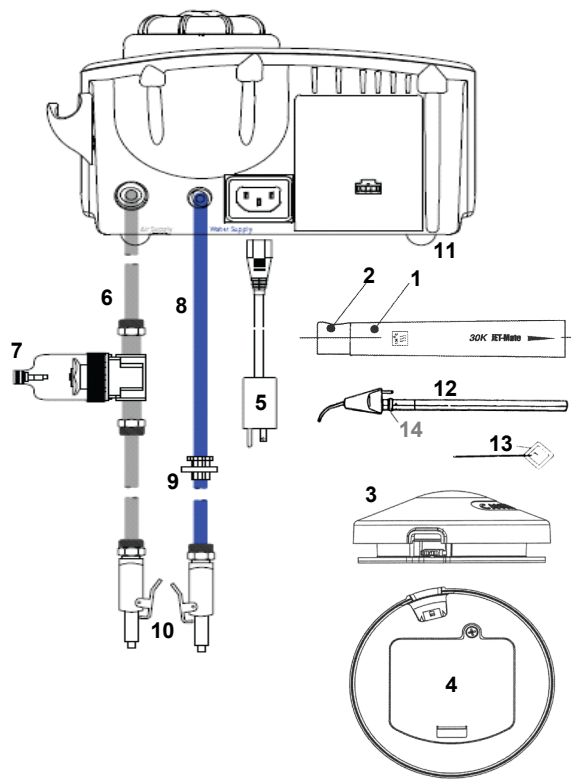
TERMS OF SETTLEMENT

Statements are rendered monthly and payment in full in U.S. funds is due within 30 days of date of invoice at the customers assigned address: DENTSPLY International Inc, Dept. DNA, P.O. Box 822462, Philadelphia, PA 19182-2642 or DENTSPLY International Inc, Dept. DNA, P.O. Box 536935, Atlanta, GA 30353-6935 or DENTSPLY International Inc, Dept. DNA, P.O. Box 31001-1205, Pasadena, CA 91110-1205. If payment has not been received by the 30th day, a monthly service charge of 1½% will be charged to the account. All payments will be applied against the oldest balance first, and then any excess will be applied to the current month balance. All invoices reflect a 2.5% discount for timely (check or wire) payments. Payments made by credit card will be charged the full amount due.

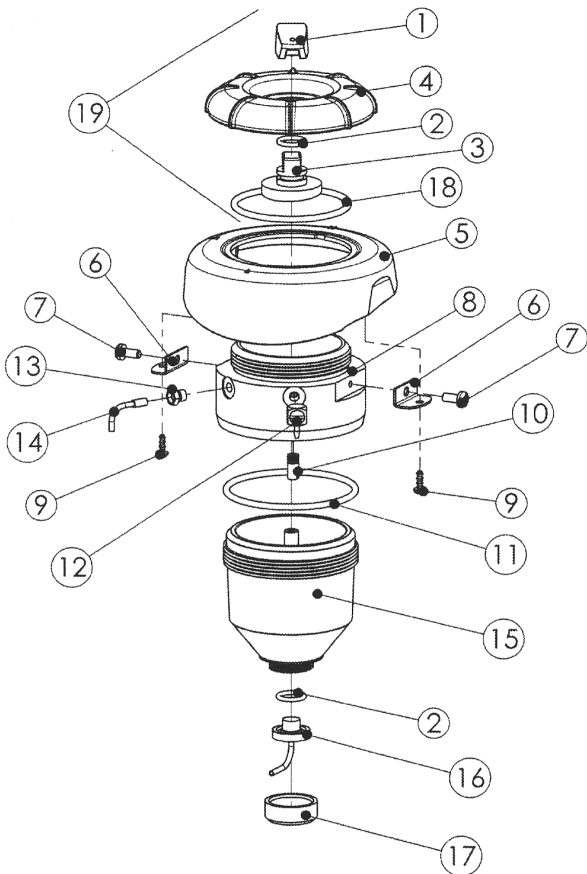
All orders accepted for future delivery will be billed at prices prevailing on date of shipment.

Products made up of multiple components must remain intact until delivered to the dental office or laboratory.

A: Accessory Items



B: Powder Chamber



Common Parts:

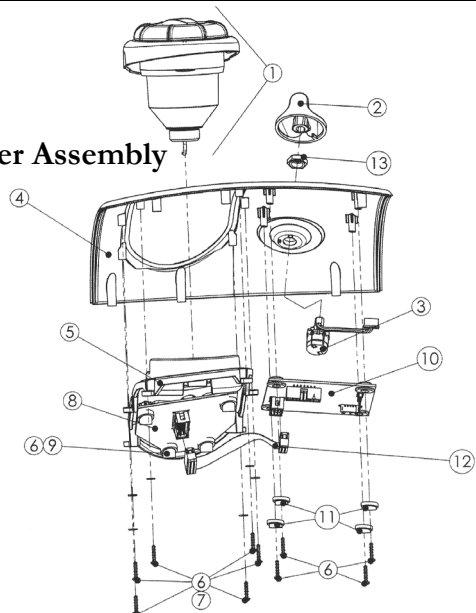
REF.	DESCRIPTION	PART #
A1	Jet-Mate Detachable Handpiece (Autoclavable)	8170201
	Jet-Mate Detachable Handpiece (Autoclavable) 3-Pack	8170203
A2	Jet-Mate Handpiece Nozzle Grip	81717
A3	Wireless Foot Control w/ Boost Feature	81674
A4	Foot Control Battery Door / Screw Kit	81680
	Auxiliary Foot Control Cable	81663
B19	Replacement Fill Cap for Powder Bowl	81728
B18	O-ring for Fill Cap	628052001
B15	Replacement Powder Bowl	81174
B11	O-ring for Powder Bowl	60384
B16	L-Nozzle Fitting for Powder Bowl	81711
B2	O-ring for L-Nozzle Fitting	628052002
B10	Threaded Filter for Chamber Housing (Metallic)	60382
C1	Powder Chamber Assembly, Complete	81708
A5	Power Cord 120/100V (US)	554102003
	Power Cord 230/200V	78118
	Power Cord 230V (UK)	554109001
A6	Air Supply Line Assembly	81721
A7	Air Supply Line Filter Assembly	90088
	Air Supply Filter Wall Mounting Kit	90080
A8	Water Supply Line Assembly <i>Includes blue tubing, water filter, and 1/4" quick disconnect</i>	90125
A9	Replacement Water Filters (10-pack)	90158
A10	Quick Disconnect (1/4", auto shut-off)	79521
C2	Replacement Control Knob (Blue)	80502
A11	Replacement Rubber Foot	592051001
A12	Prophy-Jet Air Polishing Nozzle Insert (3 pack)	7760204
	Prophy-Jet Air Polishing Nozzle Insert (single)	63740
A13	Prophy-Jet Nozzle Cleaning Tool	776030199
	O-ring Replacement Kit, Cavitron Inserts (Black,12-pack)	62351
A14	O-ring Replacement Kit, Cavitron Inserts (Green,12-pack)	62605
	O-ring for SteriMate / JETMate Handpiece Conn. (12-pack)	79357

The following repair parts are available to authorized service centers only:

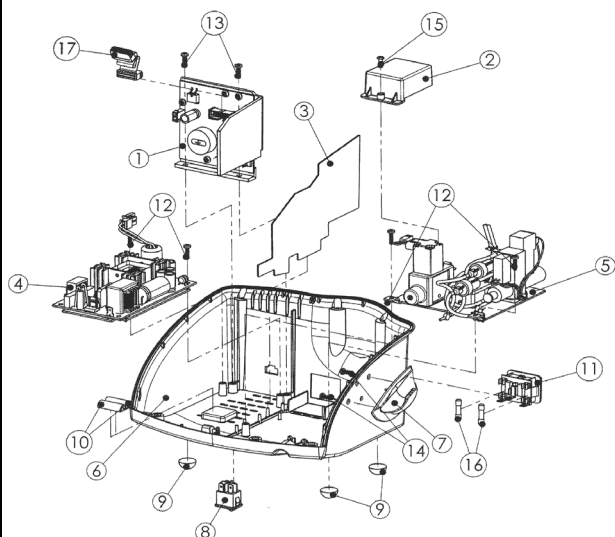
REF.	DESCRIPTION	PART #
A	Handpiece Cable, Black	81718
A3	Foot Control Pad - Bottom	81681
B5	Bowl Mount Skirt	81634
B6	L-shape Brackets	81710
B7	Screw, #6-32 x 3/8" Machine Screw	60898
B8	Powder Bowl Housing	81712
B9	Screw, #4-24 x 5/16" Hi-Lo Torx Phillips	586172001
B12	1/16" Barb Elbow Fitting	623071001
B13	Bushing	80668
B14	Powder Bent Tube	80672
B17	Knurl Nut	60379
C3	Potentiometer Switch and Harness	81638
C4	Cover, Decorated	81704
C5	Molded Overlay & Label, Info Center	81707

Cavitron® JET Plus™ - Model G132 (continued)

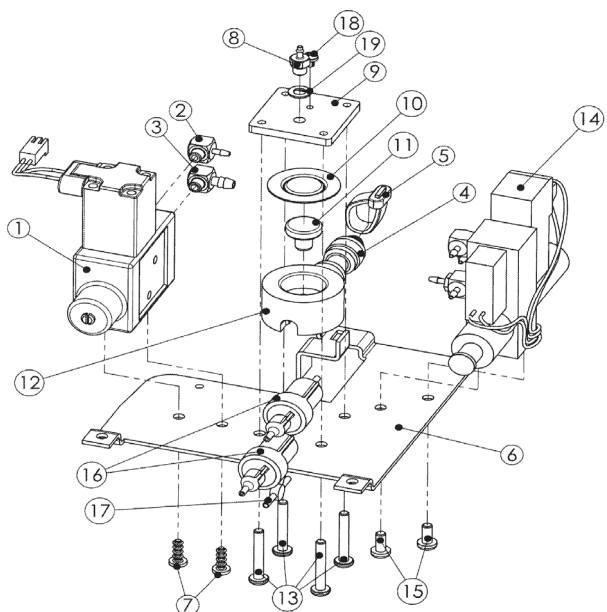
C: Cover Assembly



D: Generator Assembly



E: Air / Water Chassis

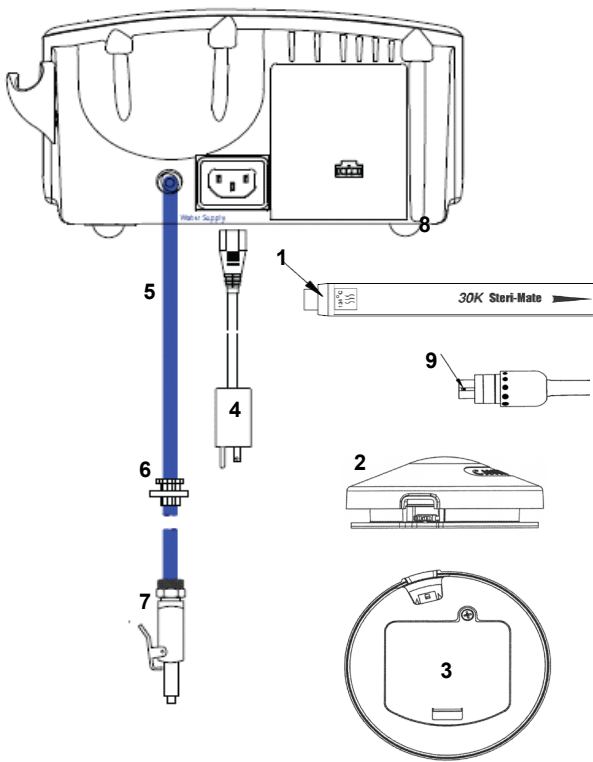


REF.	DESCRIPTION	PART #
C6	Screw, #4-24 x 1/2" Hi-Lo	586172002
C7	Washers	62970
C8	Info Center PC Board	81642
C8	Cover Protective - Info Center	81720
C9	Leveling Washers, Info Center	81636-2
C10	Main Controller PC Board	81639
C11	Leveling Washers, Main Controller	81636-1
C13	Shaft Seal / Nut	592056001
D1	Power Drive PCB Bracket Assembly	81651
D2	Protective Cover - Power Entry	81635
D3	Baffle, Electrical Protection	81665
D4	24V Power Supply Assembly *	81661-1
D5	Air/Water Chassis Assembly	81713
D6	Decorated Base	81623
D7	Handpiece Holder	81632
D8	Rocker Switch, Snap In	565179001
D10	D-section Seal, 1 inch	592055001
D11	Power Entry Module	568270002
D12	Screw, #6 x 1/2" Hi-Lo Torx, Pan	586172005
D13	Screw, #8-18 x 1/2" Hi-Lo Torx, Pan	586172003
D14	Screw, #6-19 x 3/8" Hi-Lo PPH	586174003
D15	Screw, #6-32 x 3/8" PH, Pan	62857
D17	4" Ribbon Cable	81645
D16	Fuse	557034018
D	Fuse Label	81662
D	Air/Water Supply Label	81682
E1	Water Regulator w / Fittings, Replacement Kit	81673
E1	Water Regulator / Solenoid Valve Assembly	629205003
E2	1/16" Elbow Fitting	623071001
E3	1/8" Elbow Fitting	623071004
E4	Straight Union Fitting	623072001
E5	Plastic Cable Tie	712-00004
E6	Mounting Bracket	81647
E8	Straight Fitting, 1/16 Barb x 10-32	61679
E9	Pinch Plate	81730
E10	Dynamic Seal	26109
E11	Piston	26105
E12	Pinch Cylinder	80688
E13	Screw, #6-32 x 7/8" Phillips	586009169
E14	Air Manifold Assembly	81714
E15	Screw, #6-32 x 5/16" Phillips	586133181
E16	Duckbill Filter Assembly	60367
E17	"Y" connector	60245
E18	Pressure Relief Screw	586161002
E19	Washer, Fiber	60386
	Clear Tubing, Per Foot	61693
	Red Tubing, Per Foot	61631
	Gray Tubing, Per Foot	625036010
	Yellow Tubing, Per Foot	625036012
	Nylon Cable Ties	60366
	Wire Harness, Switch to Power Supply (Meanwell) *	81648-1
	Wire Harness, Power Entry to Switch (Meanwell) *	81649-1
	Foam Seal, Power LED	592059001
	Directions For Use	81723
	Service Manual	81729

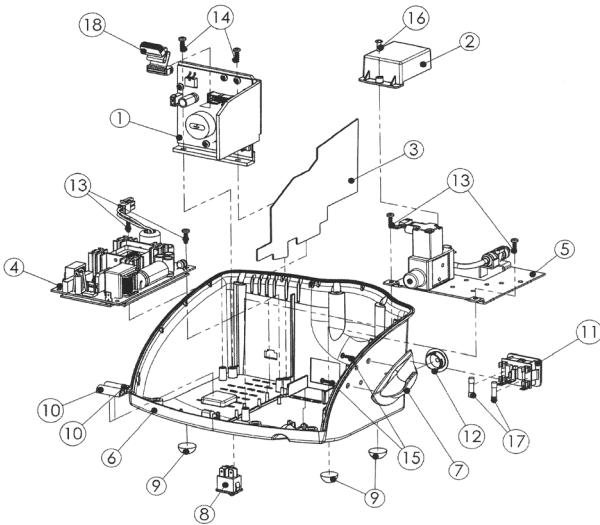
* NOTE: When replacing p/n #81661-1 24V Power Supply Assembly, be advised to also order #81648-1 and #81649-1 Wire Harness assemblies when upgrading the power supply to the current Meanwell configuration.

Cavitron® Plus™ Scaler - Model G131

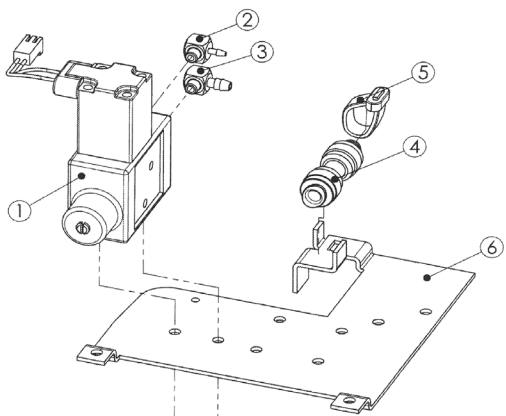
A: Accessory Items



B: Generator Assembly



C: Water Chassis



Common Parts:

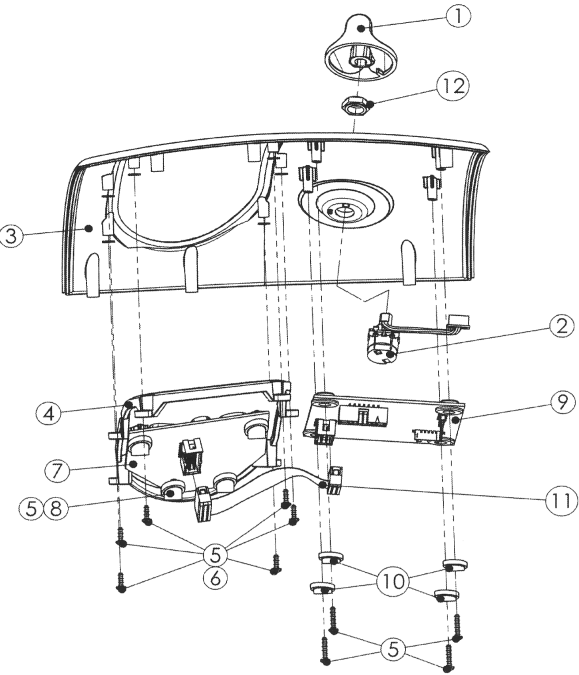
REF.	DESCRIPTION	PART #
A1	Steri-Mate Detachable Handpiece (Autoclavable)	78688
	3-Pack Steri-Mate Detachable Handpiece	78703
	Steri-Mate Comfort Grip (3-pack), Blue	8169201
	Steri-Mate Comfort Grip (3-pack), Fuschia	8169202
	Steri-Mate Comfort Grip (3-pack), Violet	8169203
A2	Wireless Foot Control w/ Boost Feature	81674
A3	Foot Control Battery Door / Screw Kit	81680
	Auxiliary Foot Control Cable	81663
A4	Power Cord 120/100V (US)	554102003
	Power Cord 230/200V	78118
	Power Cord 230V (UK)	554109001
A5	Water Supply Line Assembly <i>Includes blue tubing, water filter, and 1/4" quick disconnect</i>	90125
A6	Replacement Water Filters (10-pack)	90158
A7	Quick Disconnect (1/4", auto shut-off)	79521
D1	Replacement Control Knob (Blue)	80502
A8	Replacement Rubber Foot	592051001
	O-ring Replacement Kit, Cavitron Inserts (Black,12-pack)	62351
	O-ring Replacement Kit, Cavitron Inserts (Green,12-pack)	62605
A9	O-ring for SteriMate / JETMate Handpiece Conn. (12-pack)	79357

The following repair parts are available to authorized service centers only:

REF.	DESCRIPTION	PART #
A	Handpiece Cable, Black	81657
A2	Foot Control Pad - Bottom	81681
B1	Power Drive PCB Bracket Assembly	81651
B2	Protective Cover - Power Entry	81635
B3	Baffle, Electrical Protection	81665
B4	24V Power Supply Assembly *	81661-1
B5	Water Chassis Assembly	81646
B6	Decorated Base	81623
B7	Handpiece Holder	81632
B8	Rocker Switch, Snap In	565179001
B10	D-section Seal, 1 inch	592055001
B11	Power Entry Module	568270002
B12	Cap, Vinyl, Air	608020001
B13	Screw, #6 x 1/2" Hi-Lo Torx, Pan	586172005
B14	Screw, #8-18 x 1/2" Hi-Lo Torx, Pan	586172003
B15	Screw, #6-19 x 3/8" Hi-Lo PPH	586174003
B16	Screw, #6-32 x 3/8" PH, Pan	62857
B17	Fuse	557034018
B18	4" Ribbon Cable	81645
B	Fuse Label	81662
B	Water Supply Label	90176
C1	Water Regulator / Solenoid Valve Assembly	629205003

Cavitron® Plus™ Scaler - Model G131 (continued)

D: Cover Assembly

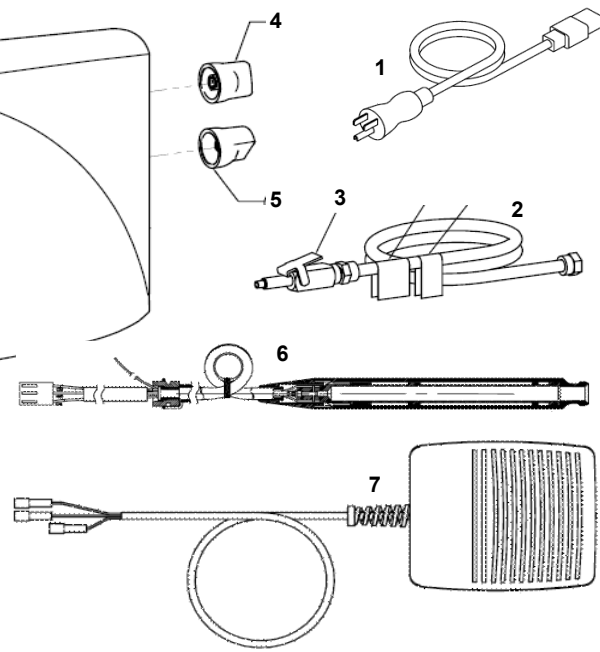


REF.	DESCRIPTION	PART #
C4	Straight Union Fitting	623072001
C5	Plastic Cable Tie	712-00004
C6	Mounting Bracket	81647
D2	Potentiometer Switch and Harness	81638
D3	Cover, Decorated	81624
D4	Molded Overlay & Label, Info Center	81627
D5	Screw, #4-24 x 1/2" Hi-Lo	586172002
D6	Upgrade Kit	62970
D7	Info Center PC Board	81642
D8	Leveling Washers, Info Center	81636-2
D9	Main Controller PC Board	81639
D10	Leveling Washers, Main Controller	81636-1
D12	Shaft Seal / Nut	592056001
	Wire Harness, Switch to Power Supply (Meanwell) *	81648-1
	Wire Harness, Power Entry to Switch (Meanwell) *	81649-1
	Foam Seal, Power LED	592059001
	Directions For Use	81667
	Service Manual	81669

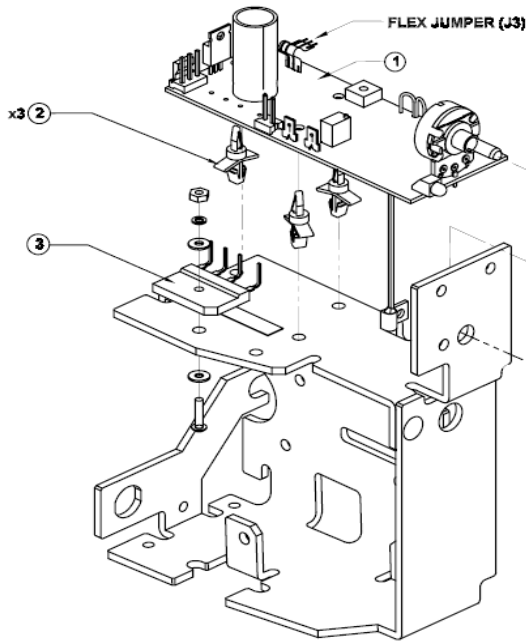
* NOTE: When replacing p/n #81661-1 24V Power Supply Assembly, be advised to also order #81648-1 and #81649-1 Wire Harness assemblies when upgrading the power supply to the current Meanwell configuration.

Cavitron® BOBCAT® Pro - Model G130

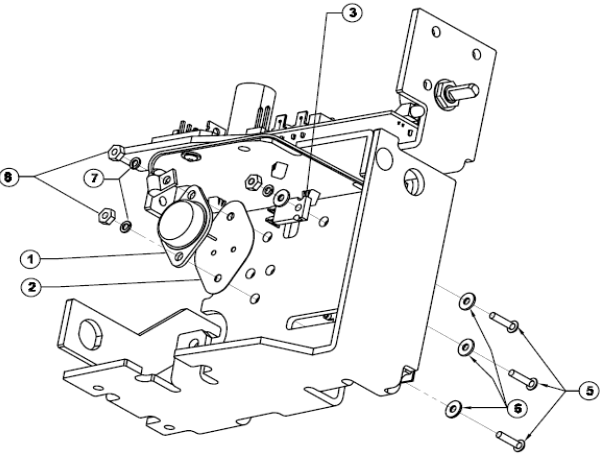
A: Accessory Items



B: PCB Mount



C: Darlington Mount



Common Parts:

REF.	DESCRIPTION	PART #
A1	Power Cord 120/100V (US)	554102003
	Power Cord 230/200V	78118
	Power Cord 230V (UK)	554109001
A2	Water Supply Line Replacement <i>Includes blue tubing, compression nut, and labels</i>	60388
A3	Quick Disconnect (1/4", auto shut-off)	90158
A4	Replacement Control Knob (Power)	79521
A5	Replacement Control Knob (Water)	80502
	Replacement Rubber Foot	700-00026
	O-ring Replacement Kit, Cavitron Inserts (Black,12-pack)	62351
	O-ring Replacement Kit, Cavitron Inserts (Green,12-pack)	62605

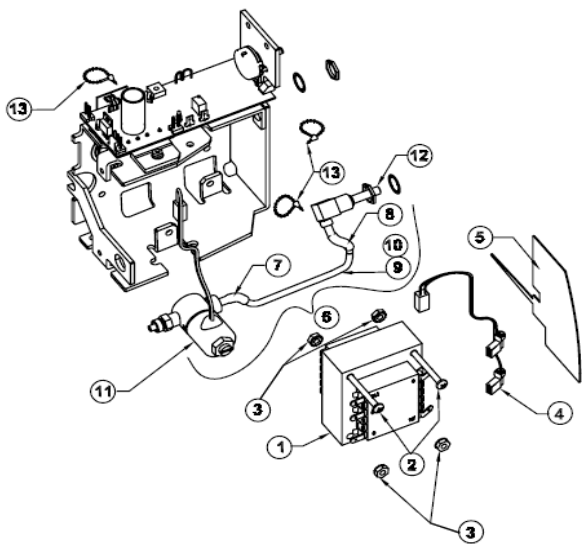
The following repair parts are available to authorized service centers only:

REF.	DESCRIPTION	PART #
A6	Handpiece Assembly	81214
A7	Footswitch Assembly	565162006

B1	Oscillator Module PC Board Assembly	81228
B2	Support, Locking PC Board	594081003
B3	Bridge Rectifier	574332001
C	Hardware Kit - Darlington, Resistor, Bridge	81259
C1	Darlington Transistor	574335001
C2	Silpad Insulator	61350
C3	Power Resistor, 1/2 Ohm, 5%	574327001
	PCB, Darlington Mount	81231
	Insulator, Power Transistor	561028001
	Jumper, Flexible	554114001
D1	Transformer, 100/115 Volts	60491
	Transformer, 220/240 Volts	60535
	Transformer, 200/230 Volts	570253001
D2	Screws, Phillips, 8-32x1.5"	42427
D3	Nut, Keps, #8-32	587091001
D4	Cable Assembly, Sec. Transformer	77818
D5	Barrier, Plastic	81248
D6	Lavage Assembly	81225
D9	Blue Tubing, Water - 7.5" (Sold Per Ft.)	81282
D10	Black Tubing, PVC	62400
D11	Water Solenoid Valve Assembly	81258
D12	Water Needle Valve	81257
D13	Nylon Cable Tie	60366
	Screw, Hi-Lo, #8x1/2 Torx	586172003
	Strain Relief, Footswitch Cable	562099001
	Wire Assembly, Black, Switch / Transformer	81244
	Wire Assembly, White, Switch / Transformer	81245
	Tubing, Heat Shrink - 3"	625076003

Cavitron® BOBCAT® Pro - Model G130 (continued)

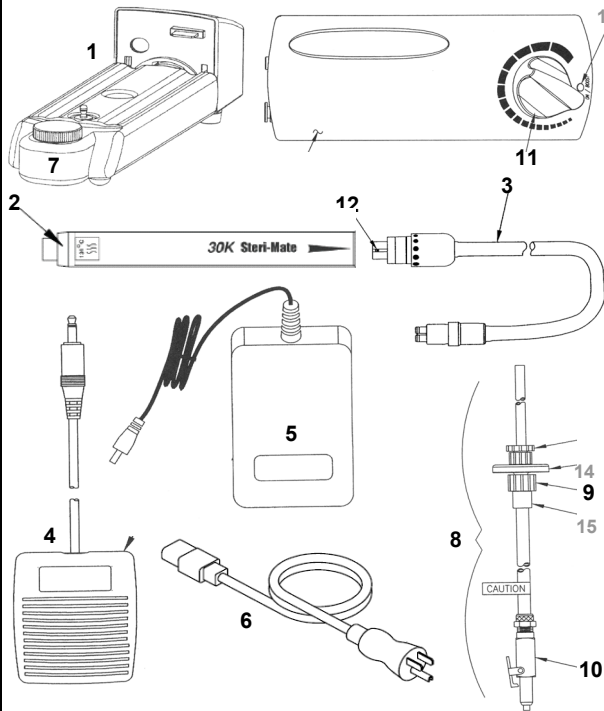
D: Transformer Mount



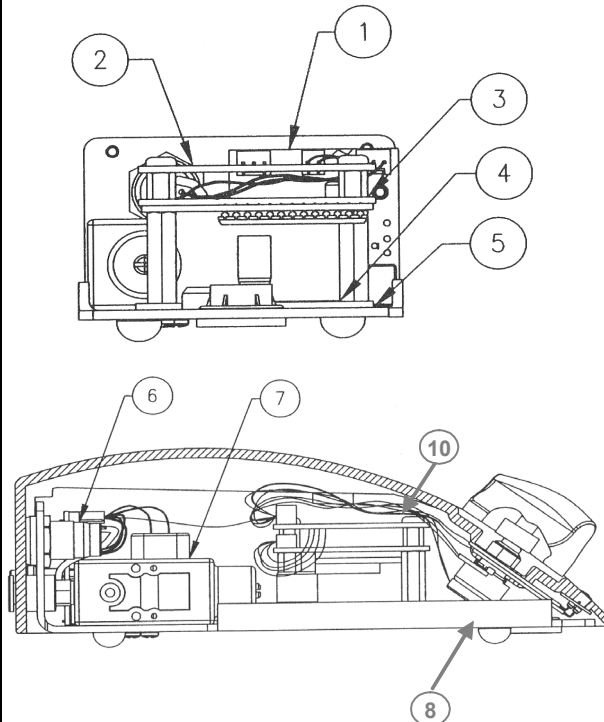
REF.	DESCRIPTION	PART #
	Fast-on Tab	569215001
	Screw, #6, Sems Philips Pan	60898
	Nut, Keps, #6-32	587091002
	Ground Wire Assembly, Chassis / Back Panel	80730
	Back Panel	81241
	Power Switch	565179001
	Cover, Power Switch	565182001
	Module, Power Entry	568270002
	Screw, Button Head Cap, #8 - 32x3/8"	586159001
	Wire Assembly, Black, Switch / Power In	81242
	Wire Assembly, White, Switch / Power In	81243
	Cabinet, Decorated, w/ Bumpers	81227
	Label, Front Panel	81235
	Spring, Strain Relief	81234
	Fuse, 1.25A, 250V, Slow Blow	557034018
	Fuse, 630 mA, 250V, Slow Blow	60537
	Nut and Sleeve Assembly	60389
	Directions For Use	81238
	Service Manual	81239

30K Cavatron® Select™ SPS™ - Model G124

A: Accessory Items



B: Base Assembly



Common Parts:

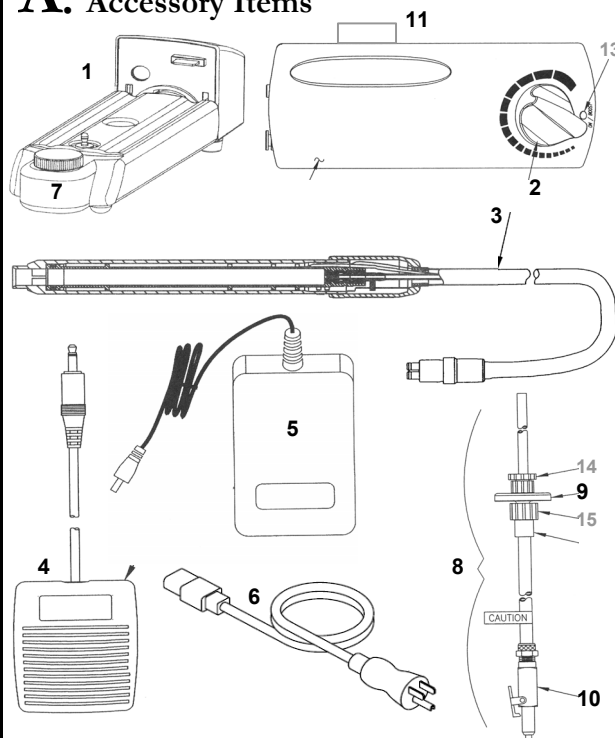
REF.	DESCRIPTION	PART #
A1	Cavatron Select Reservoir Pump (Bottle included)	90146
A2	Steri-Mate Detachable Handpiece (Autoclavable)	78688
	3-Pack Steri-Mate Detachable Handpiece	78703
	Steri-Mate Comfort Grip (3-pack), Blue	8169201
	Steri-Mate Comfort Grip (3-pack), Fuschia	8169202
	Steri-Mate Comfort Grip (3-pack), Violet	8169203
A2-3	Select SPS Swivel Handpiece Cable Upgrade w/ SteriMate	81272
A3	Handpiece Cable w/ Water Flow Control & Swivel Connector	81277
A4	Foot Control w/ Boost Feature	565162005
A5	Power Supply Module (100-240VAC 1.0A / 30VDC 2A)	674022001
A6	Power Cord 120/100V (US)	554102003
	Power Cord 230/200V	78118
	Power Cord 230V (UK)	554109001
A7	Select Reservoir Bottle Replacement	90148
	Spare O-ring Kit (Select Reservoir Pump)	90157
	Replacement Filter Plug (Select Reservoir Pump)	631030001
A8	Water Supply Line Assembly <i>Includes blue tubing, water filter, and 1/4" quick disconnect</i>	90125
A9	Replacement Water Filters (10-pack)	90158
A10	Quick Disconnect (1/4", auto shut-off)	79521
A11	Replacement Control Knob (Blue)	80502
	Replacement Rubber Foot	592051003
	O-ring Replacement Kit, Cavatron Inserts (Black,12-pack)	62351
	O-ring Replacement Kit, Cavatron Inserts (Green,12-pack)	62605
A12	O-ring for SteriMate / JETMate Handpiece Conn. (12-pack)	79357

The following repair parts are available to authorized service centers only:

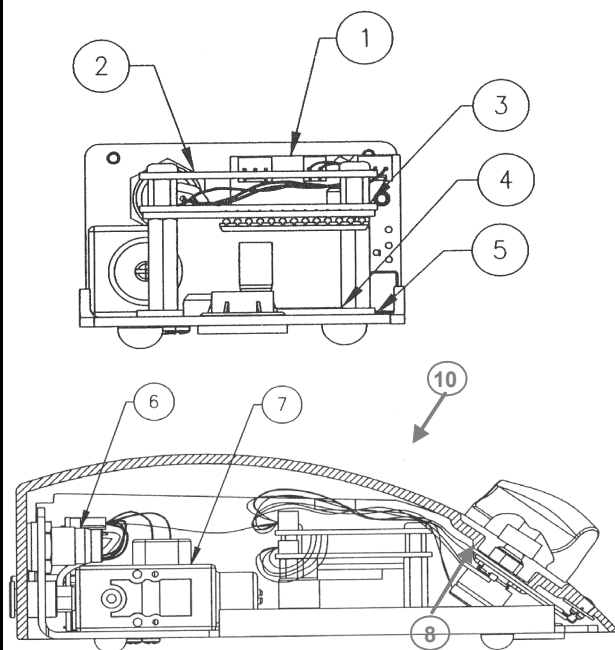
REF.	DESCRIPTION	PART #
B10	Cover Assembly w/ Pot-Switch and Knob	90277
B10	Cover, Decorated	90278
A13	Lens, LED Clear	566083002
	Catch Nylon, Reservoir	585022001
	Receptacle Label, Pump	90162
B1	Interface PC Board Assembly	90296
B2	Universal PCB Assembly	81020-1
B4	Power Drive PCB Assembly	90372
B5	Pad, PCB - Sil-Pad	574247005
B6	Handpiece Receptacle Cable Harness	90139
B7	Water Regulator/Solenoid Assembly	629205001
B8	Power Pot-Switch and Wire Harness Assembly	90291
A14	Luer, Male	621066001
A15	Luer, Female	621065001
	Water Filter, Single	631031001
	Standoff	594002020
	Screw, Standoff	62857
	Standoff, Small	594085001
	Directions For Use	90295
	Service Manual	90289

25K Cavitron® Select™ Scaler - Model G121

A: Accessory Items



B: Base Assembly



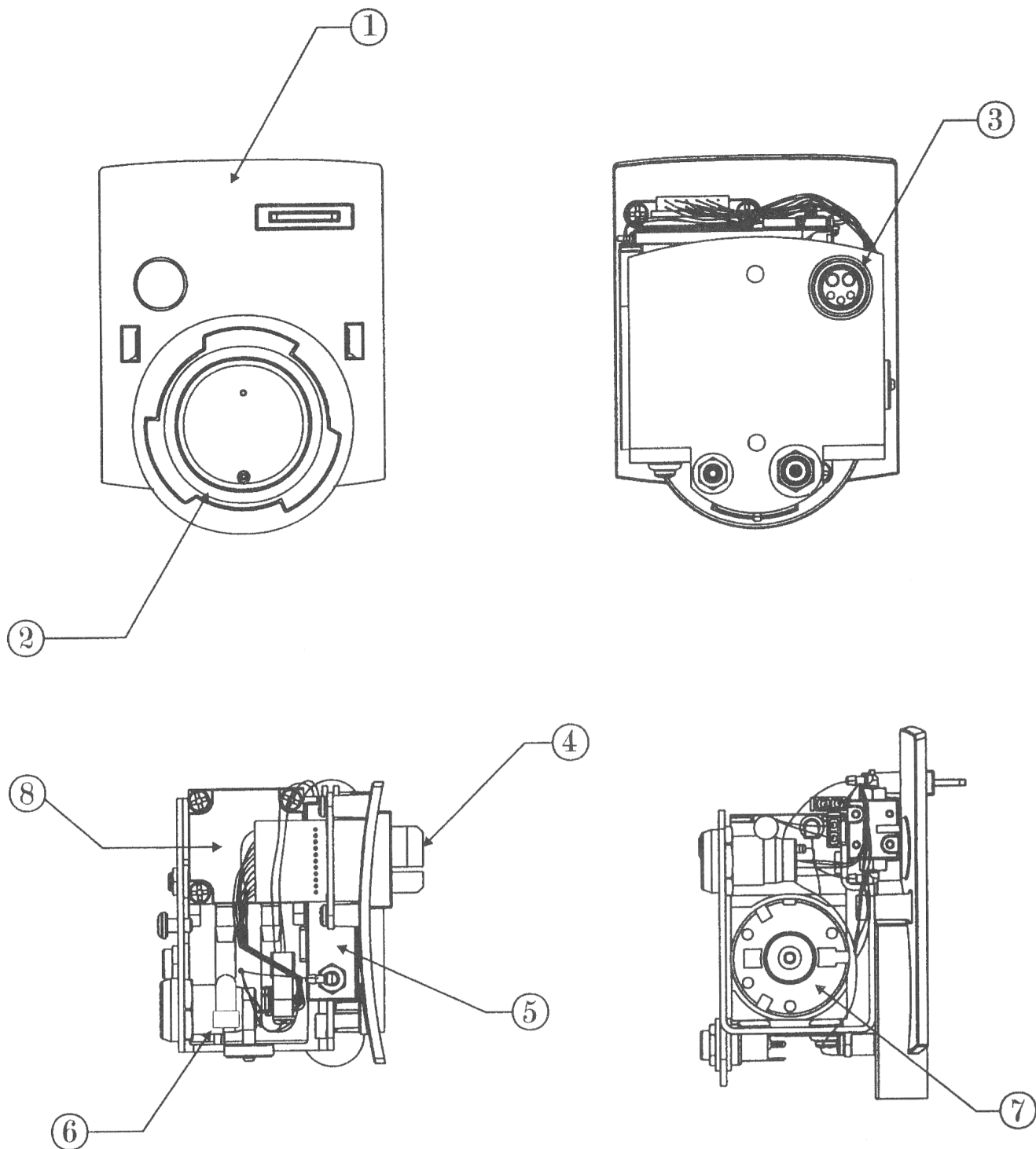
Common Parts:

REF.	DESCRIPTION	PART #
A1	Cavitron Select Reservoir Pump (Bottle included)	90146
A3	Handpiece Cable w/ Water Flow Control	90188
A4	Foot Control w/ Boost Feature	565162002
A5	Power Supply Module (100-240VAC 1.0A / 30VDC 2A)	674022001
A6	Power Cord 120/100V (US)	554102003
	Power Cord 230/200V	78118
	Power Cord 230V (UK)	554109001
A7	Select Reservoir Bottle Replacement	90148
	Spare O-ring Kit (Select Reservoir Pump)	90157
	Replacement Filter Plug (Select Reservoir Pump)	631030001
A8	Water Supply Line Assembly <i>Includes blue tubing, water filter, and 1/4" quick disconnect</i>	90125
A9	Replacement Water Filters (10-pack)	90158
A10	Quick Disconnect (1/4", auto shut-off)	79521
A2	Replacement Control Knob (Blue)	80502
	Replacement Rubber Foot	592051003
	O-ring Replacement Kit, Cavitron Inserts (Black,12-pack)	62351
	O-ring Replacement Kit, Cavitron Inserts (Green,12-pack)	62605

The following repair parts are available to authorized service centers only:

REF.	DESCRIPTION	PART #
B10	Cover, Decorated	90145
A13	Lens, LED Clear	566083001
	Catch Nylon, Reservoir	585022001
	Receptacle Label, Pump	90162
B1	Interface PC Board Assembly	90102
B2	Universal PCB Assembly	81020-2
B4	Power Drive PCB Assembly	90372
B5	Pad, PCB - Sil-Pad	574247005
B6	Handpiece Receptacle Cable Harness	90139
B7	Water Regulator/Solenoid Assembly	629205001
B8	Power Pot-Switch and Wire Harness Assembly	90140
A14	Luer, Male	621066001
A15	Luer, Female	621065001
	Water Filter, Single	631031001
	Screw, Cover	62534
	Screw, Bottom	586172002
A11	Handpiece Holder	776030149
	Screw, Handpiece Holder	62534
	Washer, Handpiece Holder	62970
	O-ring, Handpiece Receptacle	776030267
	Clear Tubing (ft)	61693
	Standoff, Large	594002020
	Screw, Standoff	62857
	Standoff, Small	594085001
	Directions For Use	90127
	Service Manual	90164

Cavatron® Select™ Reservoir Pump - Model G123



CAVITRON® SELECT™ RESERVOIR PUMP ASSEMBLY

Item	Qty.	Commodity No.	Description
1	1	90123	Interface, Pump
2	1	628001230	O-Ring, Reservoir
3	1	568279001	HP Connector
4	1	90105	Interface PCB Assy.
5	1	629204001	Isolation Valve
6	1	631030001	Filter, Plug Porous
7	1	577025001	Air Pump, 15 PSIG.
	1 Ft.	61693	Tubing, Clear .062 ID
8	1	90168	Wire Harness